

RIGHT THE SHIP: the hull as metaphor...



Paul Bowen
CURRAGHS

Wood, fabric, rope, wax, tar
6.5" x 34" x 14"



Jessica Straus
BATTEN DOWN THE HATCHES 1
Antique bottle with painted Mylar
5.5" x 8.75" x 2.75"



Christopher Volpe

SOU'WESTER #5

Tar, gold leaf, oil, on paper
5" x 7", framed: 11.5" x 13.5"



Christopher Volpe
ALONE ON A SILENT SEA
Tar and oil on panel
6" x 12"



Heather Wilcoxon

SAFE

Oil on canvas

12" x 12"



Paul Bowen
BLACK BOAT
Wood and paint
12" x 8" x 6"



Heather Wilcoxen
BLUE HEAVEN
Oil on wood panel
20" x 16"



Kingsley Parker

DRAIN

Bronze, wood, & string

3.75" x 10" x 10"



Christopher Volpe

WESTWARD #21

Tar, oil, gold leaf, on wood panel in antique frame

14" x 11"



Paul Bowen

WINTER FLEET

Wood, gesso and bees wax

4.5" x 19" x 3"



Heather Wilcoxon

RED HERRING

Oil on canvas

20" x 20"



Heather Wilcoxon

TANGLED

Oil on wood panel

20" x 24"



Heather Wilcoxon
RESQUE
Oil on wood panel
20" x 16"



Kingsley Parker
BILLIONAIRE TANKER
Mixed Media and found parts
19.5" x 48" x 8"



Paul Bowen
DEEP SEA
Ink and Oil
8" x 6"



Paul Bowen
BEFORE NIGHT

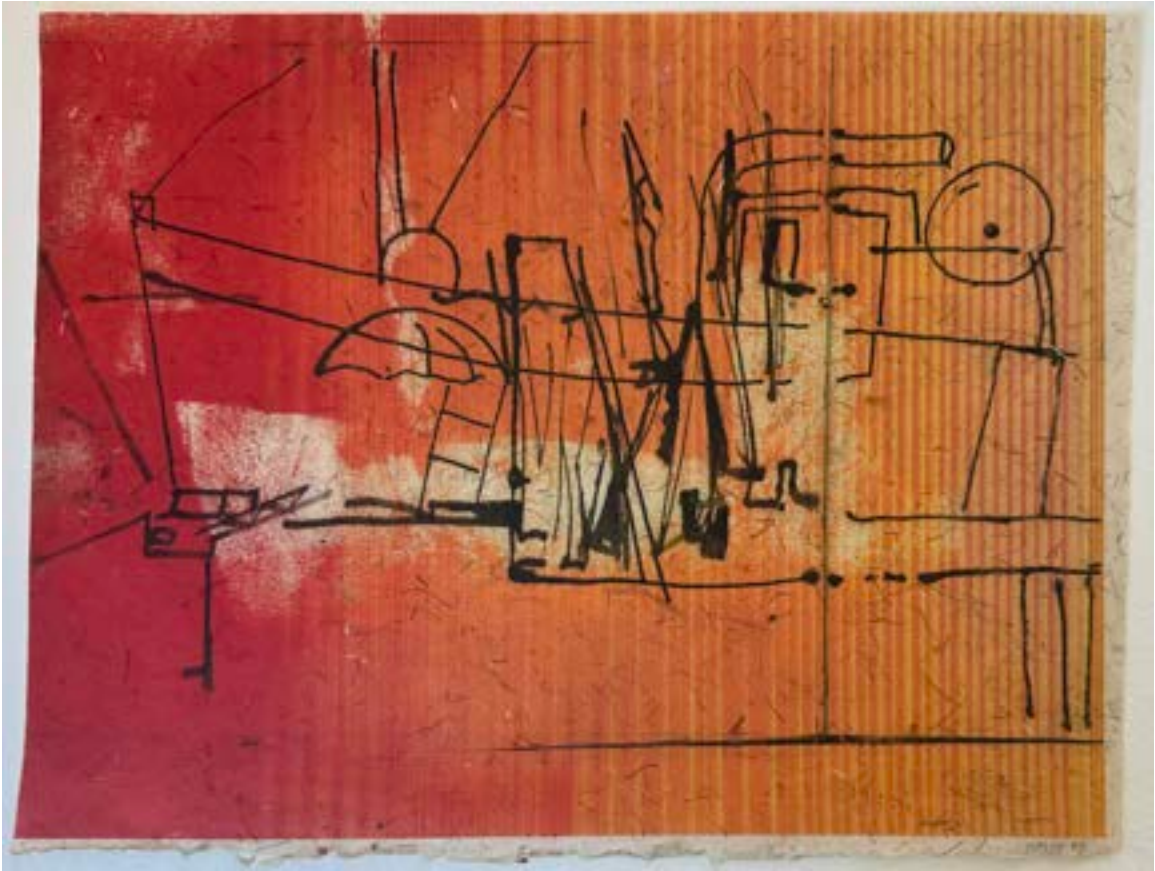
Ink
8" x 10.5"



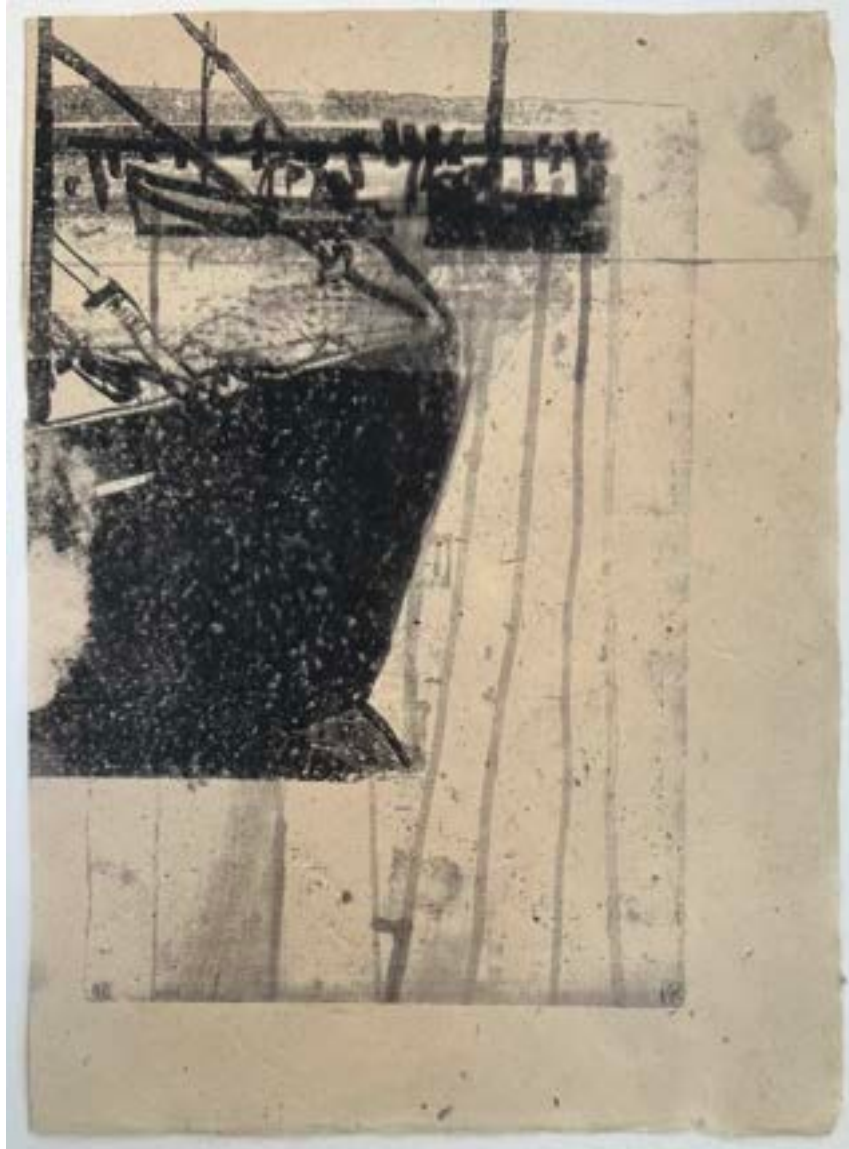
Paul Bowen
ABOVE AND BELOW
Monoprint
8" x 6.5"



Paul Bowen
SINK
Ink and oil
10" x 7.5 "



Paul Bowen
EVENING FLEET
Monotype
8" x 10.5"



Paul Bowen
WHARF
Ink
11" x 8"



Paul Bowen
INLAND SEA
Walnut ink
7" x 11"



Paul Bowen
SOFT SEA
Ink and watercolor
10" x 7"



Paul Bowen
SPLIT HULL
Ink
8" x 6"



Paul Bowen
SLOW FLEET
Oil and ink
8" x 6"



Paul Bowen
BLACK ICE
Ink and oil
9" x 12"



Kingsley Parker

FISHING WARS

Watercolor, acrylic, graphite

22" x 30"



Roger Kizick
SAKONNET
Acrylic, watercolor, on paper.
22" x 30"



Roger Kizick

TAXI I

Watercolor

22" x 30"



Roger Kizick
VOYAGING UNDER SAIL
Acrylic on panel
49" x 72"



Jessica Straus
QUEEN ELIZABETH
Mixed media with base
18" x 39" x 26"



Antoinette Winters
SAFE BOAT: SERIES IV, NO. 4
Acrylic / Mixed Media on paper
39.5" x 27.5" framed



Straus & Winters Collaboration

THE BEACHING

Acrylic ink on Mylar, found objects

60" x 60" x 2"



Kingsley Parker
GHOST TANKER
Mixed Media
12" x 46" x 11"



Roger Kizik
KATZ AT COLBY
Acrylic on canvas
36" x 48"



Kingsley Parker
THE SHIPYARD
A.P. lithograph
39" x 20.5"



Annie Bailey

THE ACCOUNT OF THE ROYAL TAR MOVING PANORAMA
35' ink on vellum illustrated scroll housed in vintage wooden
box with cranking mechanism

27" x 16" x 29"



Jessica Straus

LIFEBOAT 5

Wood, paint, letters, & string

6" x 9" x 2.5"

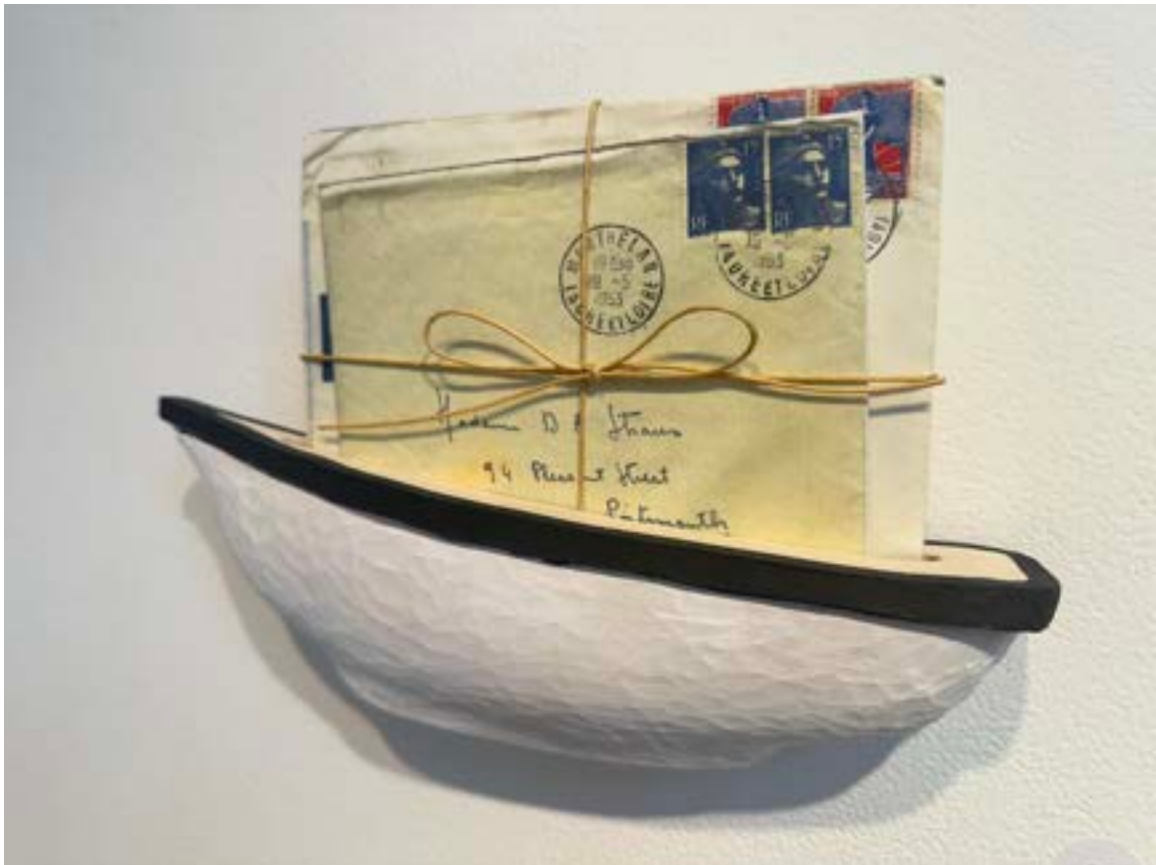


Jessica Straus

LIFEBOAT 3

Wood, paint, letters, & string

6" x 9" x 2.5"



Jessica Straus

LIFEBOAT 8

Wood, paint, letters, & string

6" x 9" x 2.5"



Jessica Straus

LIFEBOAT 4

Wood, paint, letters, & string

6" x 9" x 2.5"



Jessica Straus
BATTEN DOWN THE HATCHES 2
Antique bottle with painted Mylar
4.75" x 7" x 2.25"



Jessica Straus

FIRE, FIRE, FIRE! 1

Antique bottle with painted Mylar on stand

4.5" x 6.75" x 2.25"



Jessica Straus

FIRE, FIRE, FIRE! 1

Antique bottle with painted Mylar on stand

5.75" x 8" x 3"



Antoinette Winters

LADY

Vintage bottle with acrylic ink on Mylar

7.25" x 3" x 1.5"

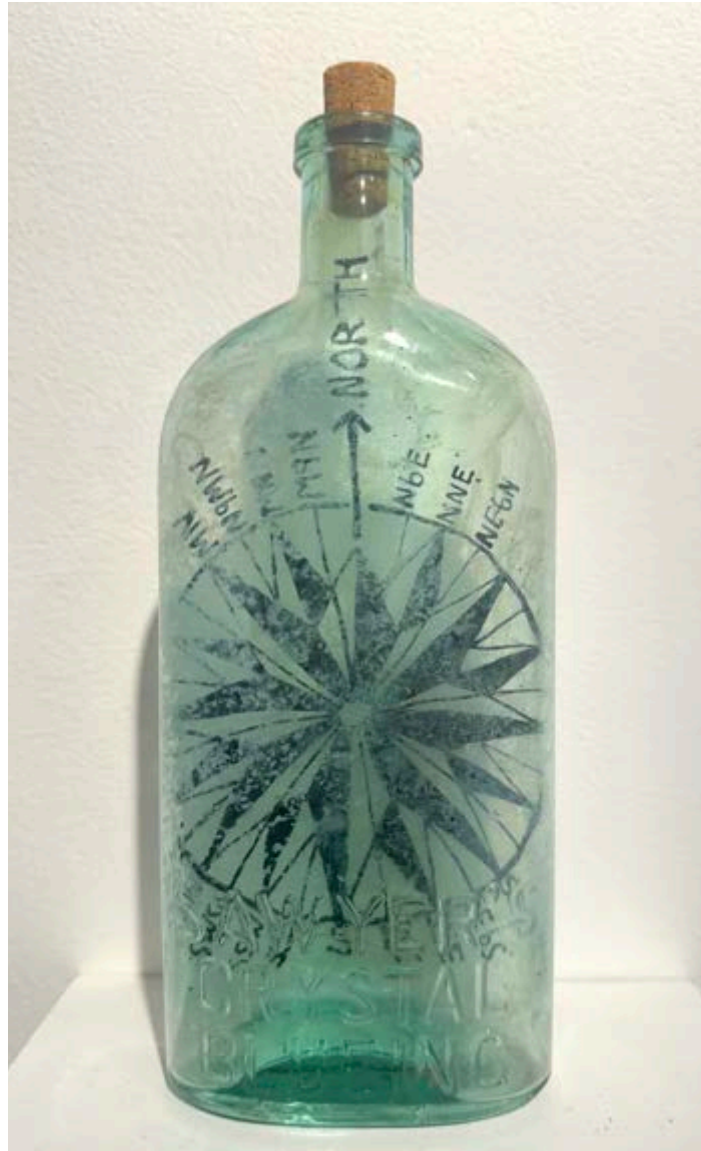


Antoinette Winters

HELM

Vintage bottle with acrylic ink on Mylar

8.75" x 3.5" x 1.75"



Antoinette Winters

COMPASS ROSE

Vintage bottle with acrylic ink on Mylar

9" x 3.5" x 1.75"



Winters & Strauss collaboration
THE BEACHING: OAK OAR
Oak oar, vintage bottle, ink on Mylar, twine
4.75" x 60" x 2"



Heather Wilcoxon

ADRIFT

Oil on wood panel

20" x 16"



Kingsley Parker
OFF COURSE, TAKING ON WATER
Colored pencil and mixed media
22.5" x 35"



Christopher Volpe

HARD TO LEE

Tar, oil, gold leaf on canvas

24" x 12"



Christopher Volpe

KEEPSAKE

Tar & oil on paper, antique tintype frame enclosure

3.75" x 3.25" x 3.5" open



Christopher Volpe

KEEPSAKE

Tar, oil on paper, antique tintype frame enclosure

3.75" x 3.25" x 3.5" open



Christopher Volpe
KEEPSAKE

Tar, oil on paper, antique tintype frame enclosure
3" x 2.5" x 2.75" open



Christopher Volpe

KEEPSAKE

Tar, oil on paper, antique tintype frame enclosure

3" x 2.5" x 2.75" open